

INOflex[®]

INOMETA

 INOMETA



MADE IN GERMANY

THE PERFECT PNEUMATIC ADAPTER-SYSTEM FOR FLEXOGRAPHIC PRINTING

INOflex[®] **INObri**idge[®] CP

WE PRODUCE PNEUMATIC CFRP BRIDGE ADAPTERS, SUITABLE FOR ALL TYPES OF MACHINES FROM ALL MANUFACTURERS

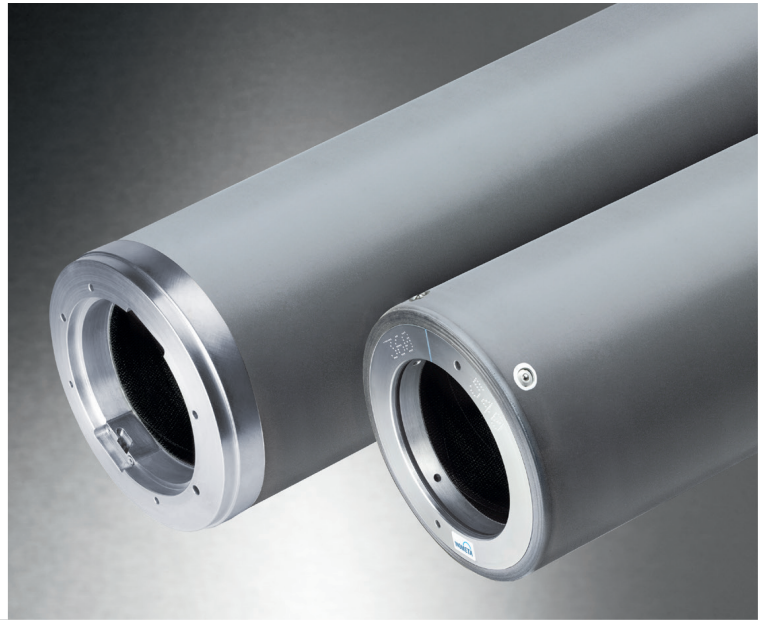
Our INObri[®] pneumatic CFRP bridge adapter is designed for high-quality flexographic printing and offers the most economic solution for optimal print results available today. This pneumatic CFRP bridge adapter has a high potential to optimize your processes over the long term, particularly when they involve quick print job changes and high production speeds.

VERSIONS

INOflex® INObriidge® CP Ecoline

Our INObriidge® CP Ecoline pneumatic CFRP adapters are the smart alternative to our Proline and ProXline adapters.

Maximum use of lightweight materials reduces the weight significantly and gives you a much shorter set-up time. The INObriidge® CP Ecoline impresses with its outstanding print quality and is optimally designed for flexible work processes and fast print job change over.



INOflex® INObriidge® CP Proline

Our INObriidge® CP Proline pneumatic CFRP adapters are the entry into the high-end range of the INOflex® pneumatic adapter family.

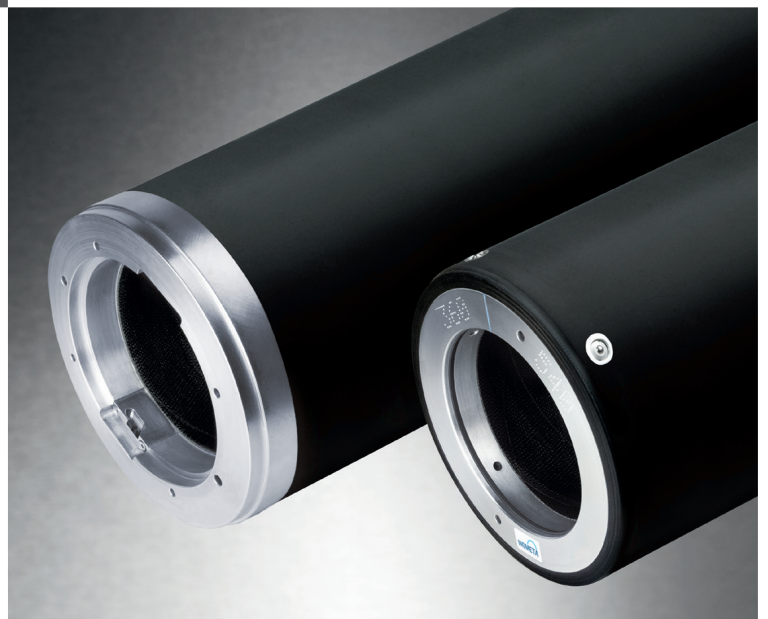
The use of high-quality materials and a consistently matched CFRP laminate enable you to achieve high flexibility and stable printing processes. Achieving the optimum print speed with less waste is the outstanding feature of the Proline version.



INOflex® INObriidge® CP ProXline

Our INObriidge® CP ProXline pneumatic CFRP adapters are the pinnacle of the INOflex® pneumatic adapter family.

Optimized for every working width and format, individually calculated CFRP laminates and high-quality materials are used to ensure maximum product rigidity and reliability, preventing vibrations to Print images with the most demanding requirements. The new INObriidge® CP ProXline pneumatic adapters are your solution for the highest demands and the full utilization of your machine performance.



STANDARD DIMENSIONS (MORE ON REQUEST)

		Ecoline	Proline	ProXline
Formats / Ø	Inner Min.	290 / 86,060 mm	290 / 86,060 mm	290 / 86,060 mm
	Inner Max.	500 / 152,905 mm	500 / 152,905 mm	500 / 152,905 mm
	Outer Min.	390 / 117,891 mm	390 / 117,891 mm	390 / 117,891 mm
	Outer Max.	1400 / 439,134 mm	1400 / 439,134 mm	1400 / 439,134 mm
Min. Format jumps		10	10	10
Max. Format jumps		limited by max. outer Ø	limited by max. outer Ø	limited by max. outer Ø
Length	Min.	650 mm	650 mm	650 mm
	Max.	1950 mm	1950 mm	1950 mm

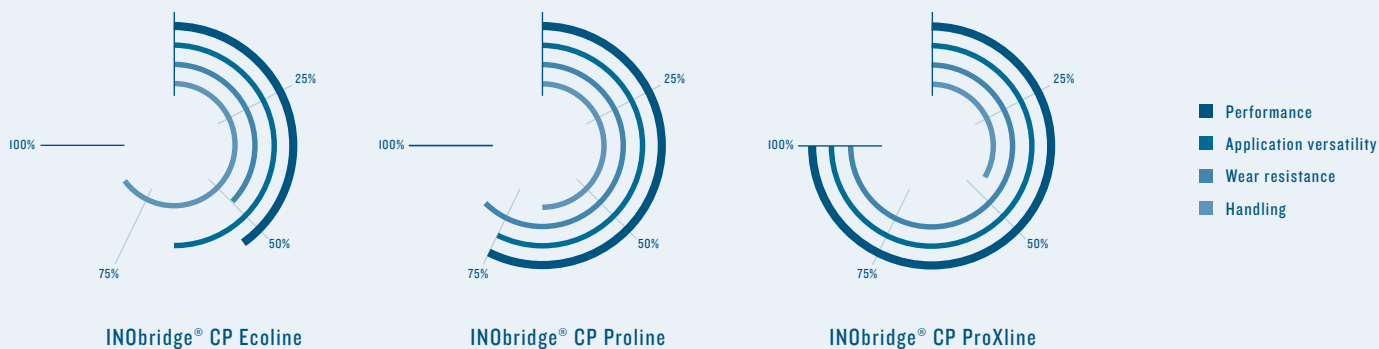
EQUIPMENT OVERVIEW

		Ecoline	Proline	ProXline
Air supply operator side	Bore	✓	✓	optional
	Bored plastic insert	-	optional	✓
	Ball valves	-	optional	optional
Air supply roller body	Bore	✓	✓	✓
	Bored plastic insert (from I5 format jumps)	-	optional	optional
	Ball valves (from I5 format jumps)	-	optional	optional
INOflex® seal	✓	✓	✓	
Coating	PROTEK® 3340	✓	✓	✓
	PROTEK® 9003*	-	optional	✓
Electrically conductive in accordance with ATEX 2014/34/EU		✓	✓	✓
INOpin	Steel	✓	✓	✓
INOslock / INOslock	Steel	✓	✓	✓
	Replaceable	✓	✓	✓
	Replacement integrated	-	✓	✓
Ø Tolerances	≤ Format 700 (Ø 216,567 mm): 0,015 mm	-	✓	✓
	> Format 700 (Ø 216,567 mm): 0,018 mm	-	✓	✓
	≤ Format 700 (Ø 216,567 mm): 0,030 mm	✓	-	-
	> Format 700 (Ø 216,567 mm): 0,035 mm	✓	-	-
Rz	4-10 µm	-	✓	✓
	8-16 µm	✓	-	-
Run out	0,015 mm	✓	✓	✓
Insert material	Aluminium	✓	✓	✓

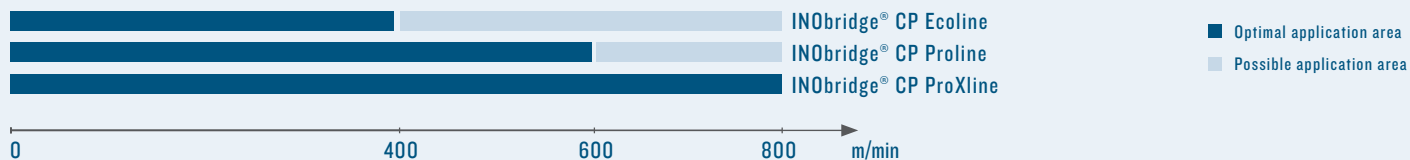
* stain-resistant surface sealing

RECOMMENDED USE

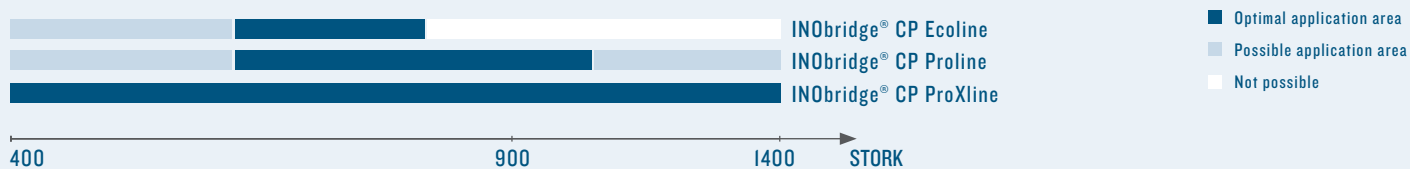
BENEFIT OVERVIEW



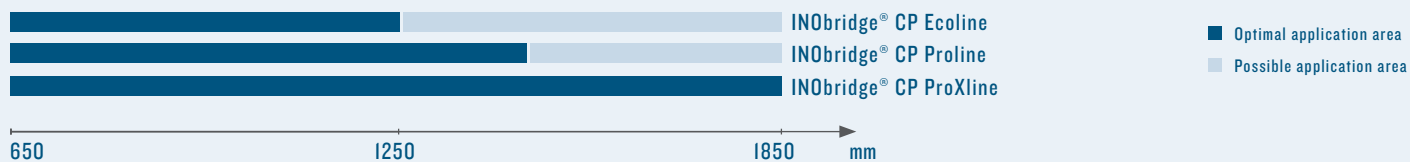
DESIRED PRINTING SPEED



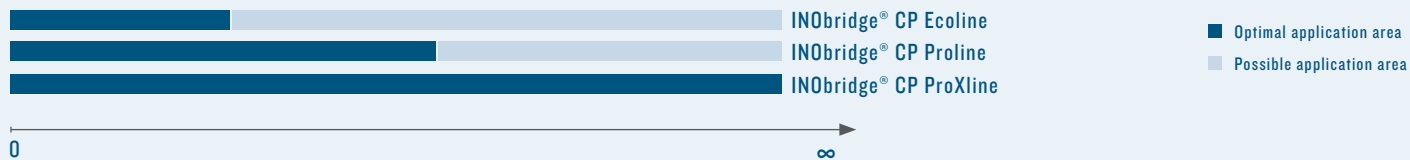
BEST PRINT RESULTS AT REPEAT



BEST PRINT RESULTS AT PRINT WIDTH



PRINTING VOLUME



INOMETA GmbH
Planckstraße 15
32052 Herford
Germany

T +49 (5221) 777-0
F +49 (5221) 777-500
info@inometa.de
www.inometa.de

CONTACT USA

INOMETA INC.
71 Newtown Rd
Box 140
Danbury, CT 06810, USA

T +1 914 602 6572
info@inometa.de
www.inometa.de/en

INOflex[®]

INOMETA offers a comprehensive portfolio of lightweight materials for use in the printing unit and other areas of flexographic printing machines. The product family INOflex[®], the system solution for flexographic printing. As a specialist for rotating printing unit components, INOMETA develops and produce components that are precisely coordinated such as anilox rollers or anilox sleeves, CFRP bridge adapters with hydraulic or pneumatic clamping systems and CFRP air mandrels. INOMETA is also the specialist in the production of web-guiding rolls and winding cores.