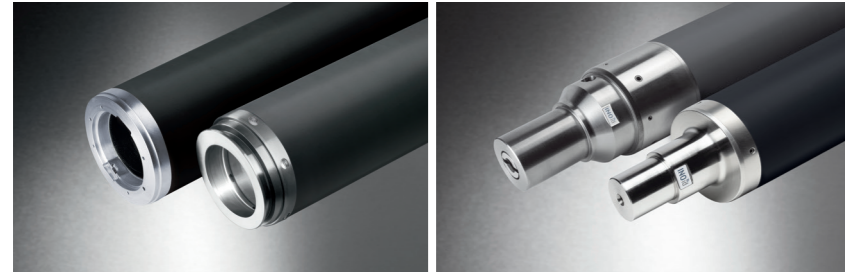


INOflex® COMPONENTS IN PRINTING UNITS



1. INObridge® CP & INObridge® CH

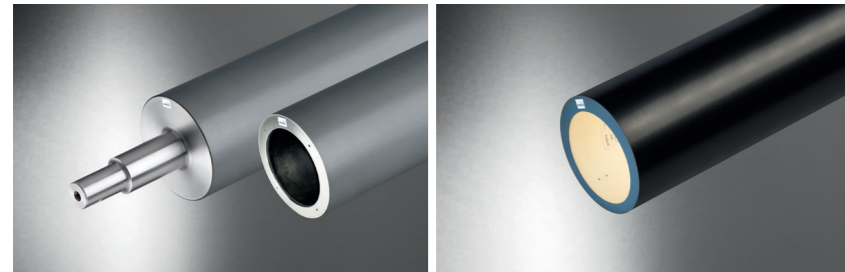
Pneumatic/hydraulic CFRP bridge adapters

- Weight reduction with maximum rigidity
- Excellent damping properties and reduction of vibrations
- Precise print results with application-specific CFRP & bridge construction
- Integrated INOflex® seal

2. INOshaft® CP & INOshaft® CPH

Pneumatic / hybrid shafts

- Higher rigidity compared to steel construction
- Excellent damping properties and reduction of vibrations
- Smaller adapter formats are possible
- Highest machine speeds
- Hydraulic or pneumatic clamping



3. INOlox®

Anilox roller / Anilox sleeve

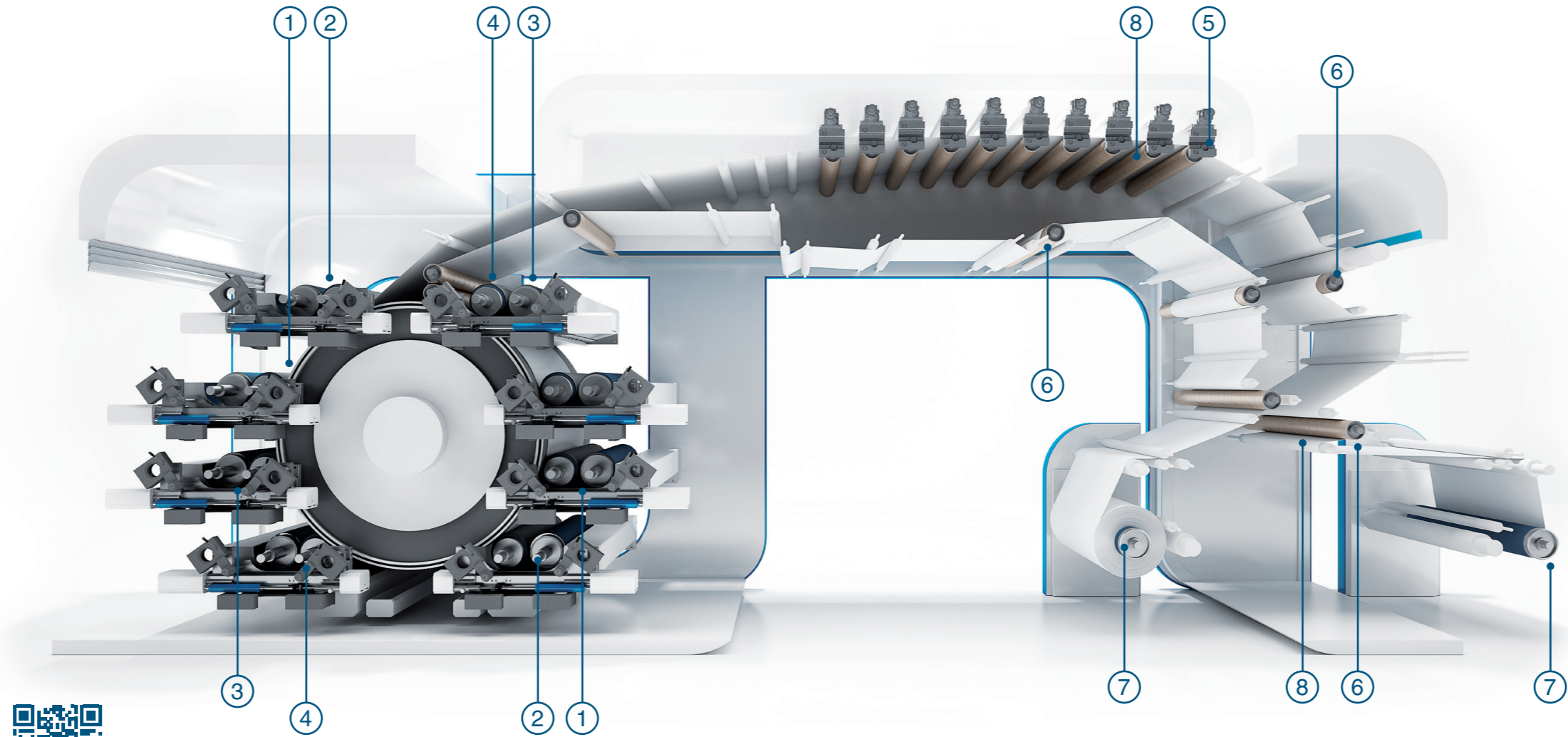
- Improved ink transfer behaviour at low cell volume
- Process reliability thanks to defined standards in the smallest tolerances
- Increased discharge behaviour due to improved cell melting
- Minimised risk of score line formation

4. INOmount®

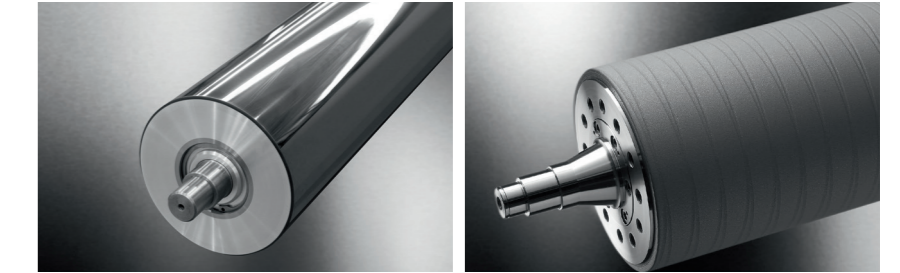
Plate Mounting Sleeve

- Optimum form stability thanks to special honeycomb structure
- Easy handling due to low weight
- Sealed and shock-absorbing end faces to prevent edge damage
- Patented installation line (cutting lines)

INOflex®



OTHER INOMETA PRODUCTS IN THE SYSTEM



5. Dryer felt rollers

- Aluminium or CFRP web guide rollers with functional coatings
- High temperature coatings
- Ready-to-install measurement and sensor rollers
- Can be supplied with axle, stub shaft or journal extension

6. Web guide rollers

- Aluminium and CFRP web guide rollers with shaft, stub shaft or journal extensions
- Various surfaces and surface structures, e.g. cylindric and polished, spiral grooved, grooved, concave, convex or structured
- Ready-to-install measurement and sensor rollers



7. WinCore® (RFID) winding cores

- Lowest tolerances and run outs
- Standard Plus design with plastic inserts
- Optional RFID tag for faster production and logistics processes
- All standard measurements can be supplied (3, 6, 8 & 10 inch)

8. PROTEK® functional surfaces

- In all areas of a flexographic printing machine can be used
- Composite or plastic coating
- Ceramic coating
- Carbide coatings
- Non-stick coatings